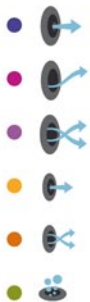


# AQUALIFE 65



Positions: 6 (5 / 1 )  
Measures: 216 x 198 x 90





ref: 61312

## Technical specifications

Measures ( ±2cm)	216 x 198 x 90
Positions (seats/loungers)	6 (5 / 1)
Water capacity (l)	980
Weight (empty / full) (kg)	330 / 1.310

Cabinet coating	G	SM
Antibacteria surface MICROBAN	•	
Acrylic colours	44 / 59 / 72	

FEATURES	
Total massage points	<b>54</b>
High pressure micro-massage	16
Circular anti-stress massage	7
Circular drainage massage	6
Reflex foot massage	1
Neck massage	2
Intensive treatment lounger jets	12
Relax Impact System nozzles	10
Headrests	3
Digital Control Panel	•
Clean Water System	•
Galvanised metal structure	•
ABS base	•
Energy Saving Cover	•
EcoSpa	Optional

FINISHES	
Bluetooth surround sound	Optional
Stainless steel nozzles	•

MASSAGE PUMPS	
Water massage	2 x 1.800 W / 2 x 2,5 HP
Relax Impact Pump	400 W

FILTRATION AND HEATING	
Recirculation pump	250 W
Water heater	3.000 W
Type of filter	Cartridge
High Performance Water Care	•

POWER SUPPLY	
Power requirement LOW AMP (W) / (A) to 230 V	4.030 W / 17,5 A

### Shell finishes

### Acrylic colors

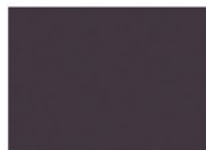


44 White

59 Sterling

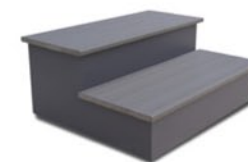
72 Pearl Cameo

### Furniture finishes



Graphite (G)

### Accessories



Woodermax GRAPHITE step  
(or BASIC model)



*Ideal accessory for taking off the spa cover  
without any effort at all.*



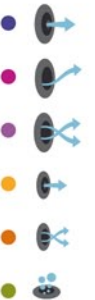
Water care



# AQUALIFE 65



Positionen: 6 (5 / 1 )  
Dimensionen: 216 x 198 x 90





## Ausstattung

ref: 61312

Dimensionen ( ±2cm)	216 x 198 x 90
Positionen (seats/loungers)	6 (5 / 1)
Wasservolumen (l)	980
Gewicht (leer/befüllt) (kg)	330 / 1.310
Verkleidungstyp Außenrahmen*1	G SM
Antibacteria surface MICROBAN	•
Acrylfarben*2	44 / 59 / 72

LEISTUNGEN	
Massagepunkte gesamt	<b>54</b>
Örtliche Druck-Mikromassage	16
Kreisende spannungslösende Massage	7
Kreisende Drainage-Massage	6
Fußreflexmassage	1
Halswirbelmassage	2
Jets Liege Intensive Treatment	12
Düsen Relax Impact System	10
Kopfstützen	3
Digitales Bedienfeld	•
Clean Water System	•
Verzinkter Metallrahmen	•
ABS-Platte	•
Energy Saving Cover	•
EcoSpa	Option

AUSFÜHRUNGEN	
Surround Bluetooth Audio	Option -
Düsen Edelstahl	•
LED-Strahler	•

MASSAGEPUMPEN	
Wassermassage / Jetpumpe	2 x 1.800 W / 2 x 2,5 HP
Relax Impact Pump / Gebläse	400 W

FILTERUNG UND HEIZUNG	
Silent Pump / Umwälzpumpe	250 W
Wassererhitzer	3.000 W
Filterung	Kartuschenfilter
Filtertyp	•

ELEKTRISCHE SPANNUNG	
Leistung Option niedrige Stromstärke (W) / (A) 230 V	4.030 W / 17,5 A

### Ausführungstyp Becken

### Acrylfarben



44 Weiß

59 Sterling

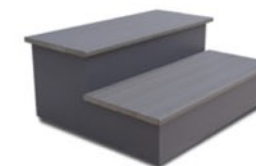
72 Pearl Cameo

### Verkleidungstyp Außenrahmen



Graphite (G)

### Zubehör



Woodermax GRAPHITE Spa-Leiter  
(oder BASIC modelle)



Ideales Zubehör zum bequemen Abnehmen  
der Spa-Abdeckung



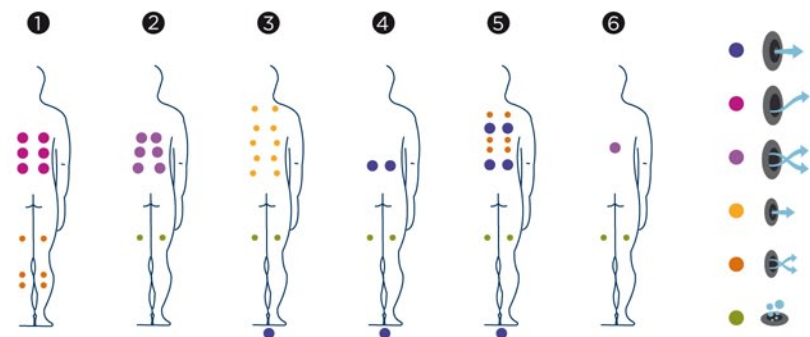
Wasserpflege-Kit



# AQUALIFE 65



Posiciones: 6 (5 / 1   
Medidas: 216 x 198 x 90



## Características técnicas



ref: 61312

Medidas ( ±2cm)	216 x 198 x 90
Posiciones (sentado / tumbado)	6 (5 / 1)
Volumen Agua (l)	980
Peso (vacío / lleno) (kg)	330 / 1.310
Tipo Revestimiento Mueble Exterior	G SM
Antibacteria surface MICROBAN	•
Colores Acrílico	44 / 59 / 72

PRESTACIONES	
Total Puntos de Masaje	<b>54</b>
Micro Masaje Localizado Presión	16
Masaje Rotativo Antitensión	7
Masaje Rotativo Drenaje	6
Masaje Pies Reflexo	1
Masaje Cervical	2
Jets Tumbona Intensive Treatment	12
Boquillas Relax Impact System	10
Reposacabezas	3
Panel de Control Digital	•
Clean Water System	•
Estructura Metálica Galvanizada	•
Base ABS	•
Energy Saving Cover	•
EcoSpa	Opcional

ACABADOS	
Surround Bluetooth Audio	Opcional
Jets/Boquillas Inoxidable	•

BOMBAS DE MASAJE	
Masaje de agua	2 x 1.800 W / 2 x 2,5 CV
Relax Impact Pump	700 W

FILTRACIÓN Y CALEFACCIÓN	
Bomba de recirculación	250 W
Calentador de agua	3.000 W
Tipo de filtro	Cartucho
High Performance Water Care	•

CORRIENTE ELÉCTRICA	
Potencia requerida LOW AMP (W) / (A) a 230 V	4.030 W / 17,5 A

## Acabados Casco

## Colores Acrílico



44 Blanco

59 Sterling

72 Perla Cameo

## Acabados Mueble



Grafito (G)

## Accesorios



Escalera Woodermax GRAFITO  
(o modelo BASIC)



Accesorio ideal para recoger de  
forma cómoda la cubierta del spa



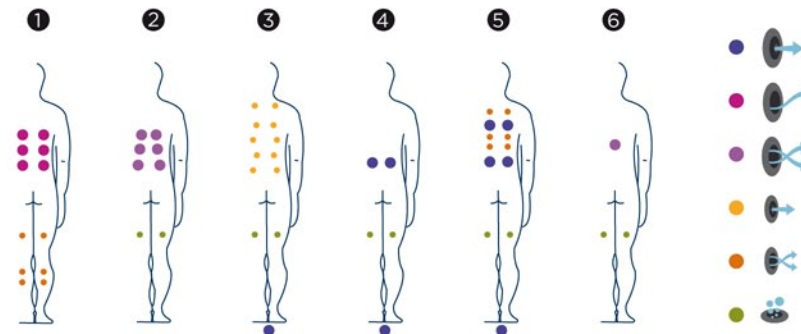
Kit de desinfección



# AQUALIFE 65



Positions: 6 (5 / 1 )  
 Dimensions: 216 x 198 x 90



## Caractéristiques techniques



ref: 61312

Dimensions ( ±2cm)	216 x 198 x 90
Positions (assises / allongées)	6 (5 / 1)
Volume Eau (l)	980
Poids (vide / plein) (kg)	330 / 1.310
Type Revêtement Meuble Extérieur*1	G SM
Antibacteria surface MICROBAN	•
Couleurs Acrylique*2	44 / 59 / 72

PRESTATIONS	
Total Points de Massage	<b>54</b>
Micro Massage Localisé Pression	16
Massage Rotatif Anti-tension	7
Massage Rotatif Drainage	6
Massage Pieds Reflexo	1
Massage Cervical	2
Jets Chaise-Longue Intensive Treatment	12
Buses Relax Impact System	10
Appuie-tête	3
Panneau de Commande Numérique	•
Clean Water System	•
Structure Métal Galvanisé	•
Base ABS	•
Energy Saving Cover	•
EcoSpa	Option

FINITIONS	
Surround Bluetooth Audio	Option
Buses Inoxydable	•

POMPES DE MASSAGE	
Massage d'eau	2 x 1.800 W / 2 x 2,5 CV
Relax Impact Pump	400 W

FILTRATION ET CHAUFFAGE	
Pompe de recirculation	250 W
Chauffage d'eau	3.000 W
Type de filtre	Cartouche
High Performance Water Care	•

COURANT ÉLECTRIQUE	
Puissance maximale LOW AMP (W) / (A) 230 V	4.030 W / 17,5 A

## Matériel des Spas

## Couleurs Acrylique



44 Blanc

59 Sterling

72 Pearl Cameo

## Bois des Spas



Graphite (G)

## Accessories



Woodermax GRAPHITE escalier spa  
(ou BASIC modèle)



Accessoire idéal pour ramasser en toute  
commodité la couverture de votre Spa.



Kit de désinfection