

# AQUALIFE 5



With two loungers equipped with an outstanding variety of hydromassage features, filtration cycles can be run in this five-seater spa. The ideal size of the Spa has been especially designed to fit through the doors of a standard home.

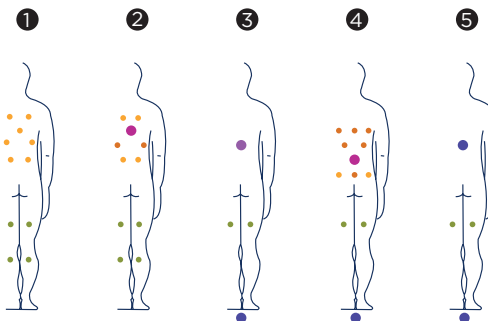
Thanks to its 28 jets and 14 air nozzles, this spa delivers optimum performance.

**Positions:** 5 (3 / 2 )

**Measures:** 198 x 195 x 74



Optional:





ref: 41578

## Technical specifications

Measures ( ±2cm)	198 x 195 x 74
Positions (seats/loungers)	5 (3 / 2)
Water capacity (l)	935
Weight (empty / full) (kg)	246 / 1.181

Cabinet coating	Graphite / Thunder Woodermax / Walnut Woodermax
Without cabinet	Optional
Acrylic colours	44 / 27 / 72 / 59 / 18

FEATURES	
Total massage points	<b>42</b>
High pressure micro-massage	16
Circular anti-stress massage	1
Circular drainage massage	10
Reflex foot massage	1
Neck massage	-
Intensive treatment lounger jets	-
Relax Impact System nozzles	14
Waterfall	-
Headrests	3
Digital Control Panel	•
Clean Water System	•
Galvanised metal structure	•
ABS base	•
Energy Saving Cover	•
EcoSpa	Optional
Nordic Insulation System	Optional

FINISHES	
3 LED spotlights	Optional
Bluetooth Sound	Optional
Stainless steel nozzles	•
Programmable WiFi Touch Panel	Optional

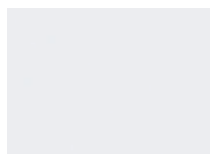
MESSAGE PUMPS	
Water massage	1.800 W / 2,5 HP
Relax Impact Pump	400 W

FILTRATION AND HEATING	
Recirculation pump	250 W
Water heater	3.000 W
Type of filter	Cartridge

POWER SUPPLY	
Power requirement LOW AMP (W) / (A) to 230 V	3.400 W / 14,8 A
Voltage	230 V / 400 V III

### Shell finishes

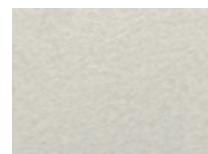
#### Acrylic colors



44 White



27 Winter Solstice



72 Pearl Cameo



59 Sterling



18 Sand

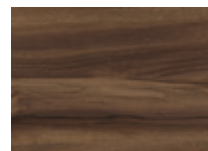
### Furniture finishes



Graphite

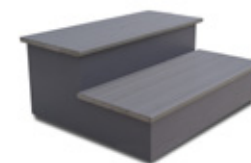


Thunder



Walnut

### Accessories



Woodermax GRAPHITE step  
(or BASIC model)



*Ideal accessory for taking off the spa cover  
without any effort at all.*



Water care

According to our policy of constant evolution, we reserve the right to modify the specifications in part or in whole without forewarning.

# AQUALIFE 5



Avec deux positions allongées, équipées d'une grande variété d'hydromassages, ce Spa de 5 places permet de réaliser des circuits de filtration. Les dimensions de ce Spa sont idéales et ont été spécialement conçues pour s'adapter aux dimensions des portes.

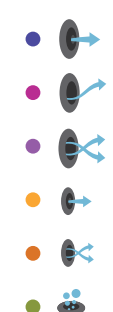
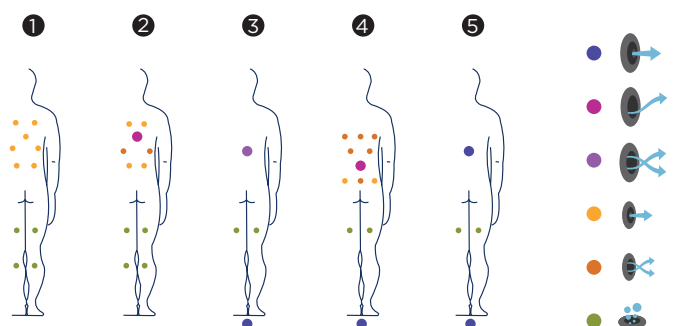
Grâce à ses 28 jets et 14 buses soufflantes, cet équipement a un rendement optimal.

**Positions:** 5 (3 / 2 )

**Dimensions:** 198 x 195 x 74



Option:



**Caractéristiques techniques**

ref: 41578

Dimensions ( ±2cm)	198 x 195 x 74
Positions (assises / allongées)	5 (3 / 2)
Volume Eau (l)	935
Poids (vide / plein) (kg)	246 / 1.181

Type de Revêtement Meuble Extérieur	Graphite / Chêne blanchi Woodermax / Noyer Woodermax
Sans habillage	Option
Couleurs Acrylique	44 / 27 / 72 / 59 / 18

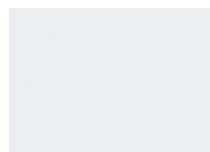
PRESTATIONS	
Total Points de Massage	<b>42</b>
Micro Massage Localisé Pression	16
Massage Rotatif Anti-tension	1
Massage Rotatif Drainage	10
Massage Pieds Reflexo	1
Massage Cervical	-
Jets Chaise-Longue Intensive Treatment	-
Buses Relax Impact System	14
Cascades Eau	-
Appuie-tête	3
Panneau de Commande Numérique	•
Clean Water System	•
Structure Métal Galvanisé	•
Base ABS	•
Energy Saving Cover	•
EcoSpa	Option
Nordic Insulation System	Option

FINITIONS	
3 Ampoules LED	Option
Bluetooth Audio	Option
Buses Inoxydable	•
Touch Panel Programmable Wifi	Option

POMPES DE MASSAGE	
Massage d'Eau	1.800 W / 2,5 CV
Relax Impact Pump	400 W

FILTRATION ET CHAUFFAGE	
Pompe de recirculation	250 W
Chauffage d'eau	3.000 W
Type de filtre	Cartouche

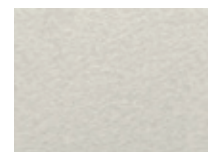
COURANT ÉLECTRIQUE	
Puissance maximale LOW AMP (W) / (A) 230 V	3.400 W / 14,8 A
Tension	230 V / 400 V III

**Matériel des Spas****Couleurs Acrylique**

44 Blanc



27 Winter Solstice



72 Pearl Cameo



59 Sterling



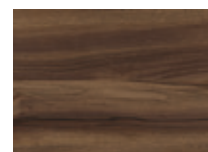
18 Sand

**Bois des Spas**

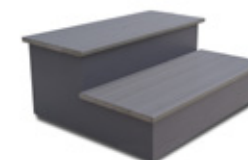
Graphite



Chêne blanchi



Noyer

**Accessories***Woodermax GRAPHITE escalier spa  
(ou BASIC modèle)**Accessoire idéal pour ramasser en toute  
commodité la couverture de votre Spa.**Kit de désinfection*

Dans le cadre de notre politique d'améliorations constantes, nous nous réservons le droit de modifier/d'amender nos spécifications n'importe quand et sans aucun préavis.

# AQUALIFE 5



Mit zwei Liegen, die mit einer beachtlichen Vielfalt an Hydromassagemöglichkeiten ausgestattet sind, ermöglicht dieser Spa mit 5 Plätzen die perfekte Entspannung. Es handelt sich um einen Spa mit idealen Abmessungen, eigens so ausgelegt, dass er durch die Türen in Wohnungen passt.

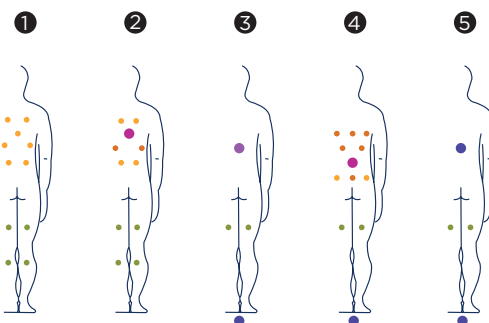
Dank seiner 28 Jets und 14 Luftinjektoren erzielt dieses Gerät eine optimale Leistung.

**Positionen:** 5 (3 / 2 )

**Dimensionen:** 198 x 195 x 74



Option:





ref: 41578

**Ausstattung**

Dimensionen ( ±2cm)	198 x 195 x 74
Positionen (Sitze/Liege)	5 (3 / 2)
Wasservolumen (l)	935
Gewicht (leer/befüllt) (kg)	246 / 1.181

Verkleidungstyp Außenrahmen	Graphit / Thunder Woodermax / Nussbaum Woodermax
Metallrahmen	Option
Acrylfarben	44 / 27 / 72 / 59 / 18

LEISTUNGEN	
Massagepunkte gesamt	<b>42</b>
Örtliche Druck-Mikromassage	16
Kreisende spannungslösende Massage	1
Kreisende Drainage-Massage	10
Fußreflexmassage	1
Halswirbelmassage	-
Jets Liege intensive Behandlung	-
Düsen Relax Impact System	14
Wasserfälle	-
Kopfstützen	3
Digitales Bedienfeld	•
Clean Water System	•
Verzinkter Metallrahmen	•
ABS-Platte	•
Thermoabdeckung	•
EcoSpa	Option
Nordic Insulation System	Option

AUSFÜHRUNGEN	
3 LED-Strahler	Option
Bluetooth Audio	Option
Düsen Edelstahl	•
Programmierbares Touch Panel Wifi	Option

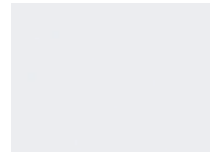
MASSAGEPUMPEN	
Wassermassage / Jetpumpe	1.800 W / 2,5 HP
Relax Impact Pump / Gebläse	400 W

FILTER UND HEIZUNG	
Silent Pump / Umwälzpumpe	250 W
Wassrerhitzer	3.000 W
Filtertyp	Kartuschenfilter

ELEKTRISCHE SPANNUNG	
Leistung Option niedrige Stromstärke (W) / (A) 230 V	3.400 W / 14,8 A
Stromspannung	230 V / 400 V III

Ausführungstyp Becken

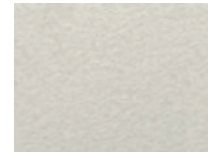
**Acrylfarben**



44 Weiß



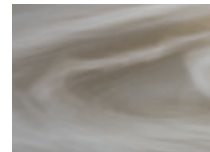
27 Winter Solstice



72 Pearl Cameo



59 Sterling



18 Sand

Verkleidungstyp Außenrahmen



Graphit



Thunder



Nussbaum

Zubehör



*Woodermax GRAPHITE Spa-Leiter  
(oder BASIC modelle)*



*Ideales Zubehör zum bequemen Abnehmen  
der Spa-Abdeckung*



*Wasserpflege-Kit*

Im Rahmen unserer Bemühungen um ständige Verbesserungen behalten wir uns das Recht vor, ohne weitere Bekanntmachungen Änderungen an der Konstruktion und den technischen Daten vorzunehmen.

# AQUALIFE 5



Con dos tumbonas, equipadas con una variedad notable de hidromasajes, éste spa de 5 plazas, permite realizar circuitos de filtración. Se trata de un spa con unas medidas ideales, diseñado especialmente para adaptarse a las medidas de las puertas de los hogares.

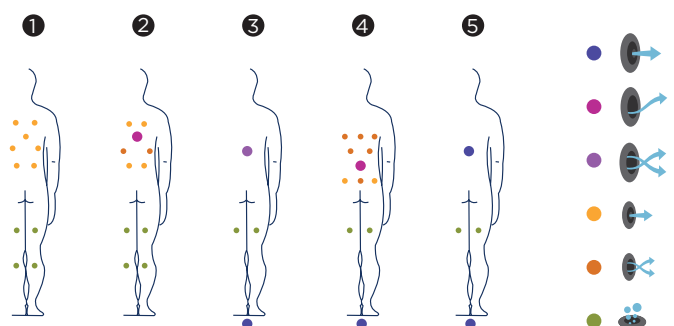
Gracias a sus 28 jets y 14 inyectores de aire, este equipo, consigue un rendimiento óptimo.

**Posiciones:** 5 (3 / 2)

**Medidas:** 198 x 195 x 74



Optional:



**Características técnicas**

ref: 41578

Medidas ( ±2cm)	198 x 195 x 74
Posiciones (sentado / tumbado)	5 (3 / 2)
Volumen Agua (l)	935
Peso (vacío / lleno) (kg)	246 / 1.181

Tipo Revestimiento Mueble Exterior	Grafito / Thunder Woodermax / Nogal Woodermax
Sin revestimiento	Opcional
Colores Acrílico	44 / 27 / 72 / 59 / 18

PRESTACIONES	
Total Puntos de Masaje	<b>42</b>
Micro Masaje Localizado Presión	16
Masaje Rotativo Antitensión	1
Masaje Rotativo Drenaje	10
Masaje Pies Reflexo	1
Masaje Cervical	-
Jets Tumbona Intensive Treatment	-
Boquillas Relax Impact System	14
Cascadas Agua	-
Reposacabezas	3
Panel de Control Digital	•
Clean Water System	•
Estructura Metálica Galvanizada	•
Base ABS	•
Energy Saving Cover	•
EcoSpa	Opcional
Nordic Insulation System	Opcional

ACABADOS	
3 Focos LED	Opcional
Bluetooth Audio	Opcional
Boquillas Inoxidable	•
Touch Panel Programable Wifi	Opcional

BOMBAS DE MASAJE	
Masaje de agua	1.800 W / 2,5 CV
Relax Impact Pump	400 W

FILTRACIÓN Y CALEFACCIÓN	
Bomba de recirculación	250 W
Calentador de agua	3.000 W
Tipo de filtro	Cartucho

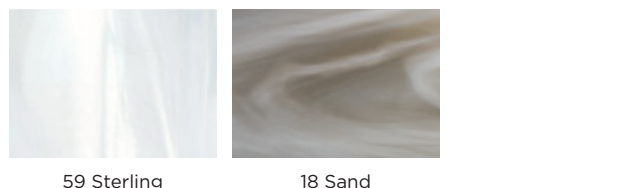
CORRIENTE ELÉCTRICA	
Potencia requerida LOW AMP (W) / (A) a 230 V	3.400 W / 14,8 A
Voltaje	230 V / 400 V III

**Acabados Casco****Colores Acrílico**

44 Blanco

27 Winter Solstice

72 Perla Cameo



59 Sterling

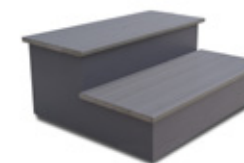
18 Sand

**Acabados Mueble**

Grafito

Thunder

Nogal

**AQUAVIA**  
S P A
**Accesorios**
*Escalera Woodermax GRAFITO  
(o modelo BASIC)*

*Accesorio ideal para recoger de  
forma cómoda la cubierta del spa*

*Kit de desinfección*

Como parte de nuestra política de mejoramiento continuo, nos reservamos el derecho de modificar el diseño y/o especificaciones sin previo aviso.



# AQUALIFE 5



Con due lettini, equipaggiati con una notevole varietà di idromassaggi, questa spa a 5 posti permette di realizzare circuiti di filtraggio. Si tratta di una spa dalle misure ideali, specificamente progettata per adattarsi alle misure delle porte delle case.

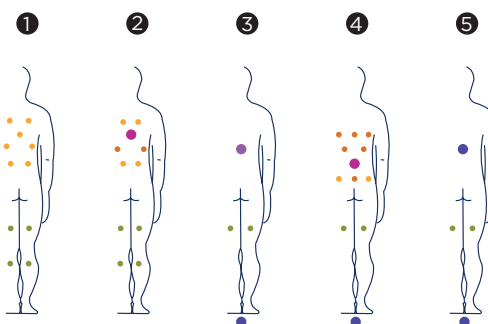
Grazie ai suoi 28 jet e 14 iniettori d'aria, questo apparecchio offre una resa ottimale.

**Posizioni:** 5 (3 / 2 )

**Misure:** 198 x 195 x 74



Opzionale:





ref: 41578

## Caratteristiche

Misure ( ±2 cm)	198 x 195 x 74
Posizioni (seduto / sdraiato)	5 (3 / 2)
Volume acqua (l)	935
Peso (vuota/piena) (kg)	246 / 1.181

Tipo di rivestimento del mobile esterno	Grafite / Thunder Woodermax / Nogal Woodermax
Senza rivestimento	Opzionale
Colori Acrilico	44 / 27 / 72 / 59 / 18

PRESTAZIONI	
Totale punti di massaggio	<b>42</b>
Micro massaggio localizzato a pressione	16
Massaggio rotativo antitensione	1
Massaggio rotativo drenante	10
Massaggio ai piedi Reflexo	1
Massaggio cervicale	-
Jet lettino Intensive Treatment	-
Bocchette Relax Impact System	14
Cascate d'acqua	-
Poggiatesta	3
Pannello di controllo digitale	•
Clean Water System	•
Struttura metallica galvanizzata	•
Base ABS	•
Energy Saving Cover	•
EcoSpa	Opzionale
Nordic Insulation System	Opzionale

FINITURE	
3 luci LED	Opzionale
Bluetooth Audio	Opzionale
Bocchette Inossidabile	•
Touch Panel Programmabile Wi-Fi	Opzionale

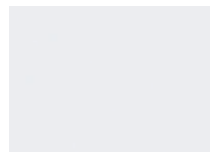
POMPE DI MASSAGGIO	
Massaggio ad acqua	1.800 W / 2,5 CV
Relax Impact Pump	400 W

FILTRAGGIO E RISCALDAMENTO	
Pompa di ricircolo	250 W
Scaldaacqua	3.000 W
Tipo di filtro	Cartuccia

CORRENTE ELETTRICA	
Potenza necessaria LOW AMP (W) / (A) a 230 V	3.400 W / 14,8 A
Tensione	230 V / 400 V III

### Materiale Vasca

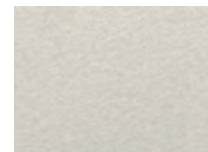
### Colori superficie acrilica



44 Bianco



27 Winter Solstice



72 Perla Cameo



59 Sterling



18 Sand

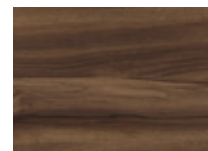
### Mobile in sintetico



Grafite

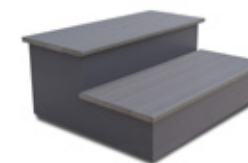


Thunder



Noce

### Accessori



*Escaletta Woodermax GRAFITE  
(o BASIC)*



*Copertura con supporto metalico*



*Kit di disinfezione*

Fedeli alla nostra politica di continuo miglioramento, ci riserviamo il diritto di modificare il design e/o le specifiche senza preavviso.

# AQUALIFE 5



Deze spa voor vijf personen heeft twee ligplaatsen met uitgebreide hydromassageopties en kan ook filtratiecycli doen. De grootte van de spa is speciaal ontworpen om door standaarddeuren te passen.

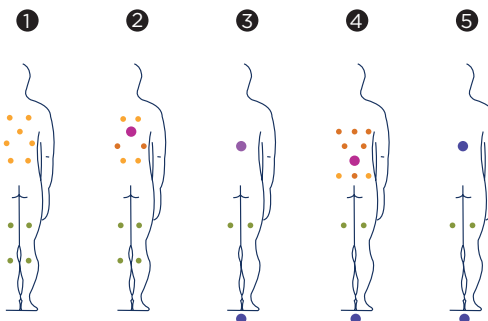
Met de 28 jets en 14 luchtinjectoren staat deze spa garant voor optimale prestaties.

**Posities:** 5 (3 / 2 )

**Afmetingen:** 198 x 195 x 74



Optioneel:



**Technische eigenschappen**

ref: 41578

Afmetingen (± 2 cm)	198 x 195 x 74
Posities (zit-/ligplaatsen)	5 (3 / 2)
Watervolume (L)	935
Gewicht (leeg/vol) (kg)	246 / 1.181

Coating raamwerk	Grafiet / Thunder Woodermax / Walnoot Woodermax
Zonder raamwerk	Optioneel
Acrylkleuren	44 / 27 / 72 / 59 / 18

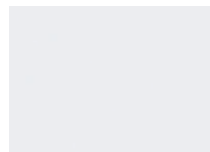
KENMERKEN	
Micromassage met hoge druk	<b>42</b>
Micromassage met lage druk	16
Cirkelvormige anti-stressmassage	1
Cirkelvormige drainagemassage	10
Voetreflexmassage	1
Nekmassage	-
Ligplaatsjets voor intensieve behandeling	-
Relax Impact System-injectoren	14
Waterval	-
Hoofsteunen	3
Digitaal bedieningspaneel	•
Clean Water-systeem	•
Structuur in gegalvaniseerd metaal	•
Basis in ABS	•
Energy Saving Cover	•
EcoSpa	Optioneel
Nordic Insulation System	Optioneel

AFWERKINGEN	
3 LED-spotlights	Optioneel
Audio Bluetooth	Optioneel
Roestvrijstalen injectoren	•
Programmeerbaar wifi-aanraakscherm	Optioneel

MASSAGEPOMPEN	
Watermassage	1.800 W / 2,5 PK
Relax Impact-pomp	400 W

FILTRATIE EN VERWARMING	
Hercirculatiepomp	250 W
Waterboiler	3.000 W
Filtertype	Patroon

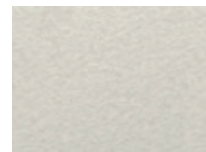
STROOMTOEVOER	
Vereist vermogen LOW AMP (W) / (A) aan 230 V	3.400 W / 14,8 A
Spanning	230 V / 400 V III

**Afwerking****Acrylkleuren**

44 White



27 Winter Solstice



72 Pearl Cameo



59 Sterling



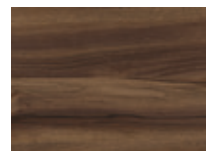
18 Sand

**Coating raamwerk**

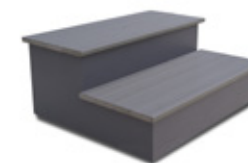
Grafiet



Thunder



Walnoot

**Accessoires***GRAPHITE Spatrapje**Easy-off Spa Cover Lifter**Ideale kit voor het reinigen van uw spawater*

Overeenkomstig ons beleid van voortdurende ontwikkeling behouden wij ons het recht voor om de specificaties geheel of gedeeltelijk te wijzigen zonder voorafgaande kennisgeving.

# AQUALIFE 5

AQUAVIA  
SPA



Oblíbený pětímístný model se dvěma lehátky vybaven různými masážními tryskami. Tato vana má ideální velikost, protože byla speciálně navržena tak, aby se vešla standardními dveřmi.

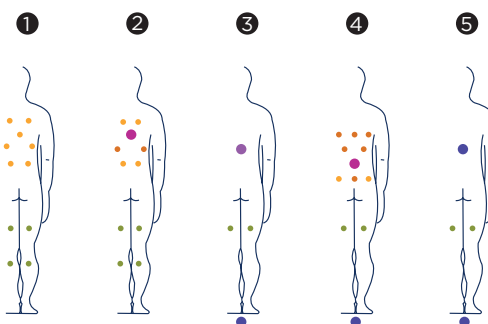
Díky svým 28 hydromasážním a 14 vzduchovým tryskám, dodává optimální výkon.

**Pozice:** 5 (3 / 2)

**Rozměry:** 198 x 195 x 74



Volitelné:





ref: 41578

## Technická Specifikace

Rozměry ( ±2cm)	198 x 195 x 74
Pozice (sedačky/lehátka)	5 (3 / 2)
Vodní Kapacita (l)	935
Váha (Prázdňá/Plná) (kg)	246 / 1.181

Obložení	Graphite / Thunder Woodermax / Walnut Woodermax
Bez obložení	Volitelné
Barva Akrylu	44 / 27 / 72 / 59 / 18

VÝBAVA	
Celkový Počet Trysek	<b>42</b>
Přímé Trysky	16
Antistresové Rotační	1
Rotační trysky	10
Trysky pro masáž nohou	1
Krční trysky	-
Lehátkové trysky	-
Vzduchové trysky	14
Vodopád	-
Opěrky	3
Digitální Ovládací Panel	•
Ozonátor	•
Pozinkovaná Konstrukce	•
Abs Zpodní Plát	•
Termokryt	•
EcoSpa	Volitelné
Nordic Insulation System	Volitelné

FINISHES	
3 Led Osvětlení	Volitelné
Bluetooth Audio	Volitelné
Nerezové Provedení	•
Wi-Fi Dotykový Panel	Volitelné

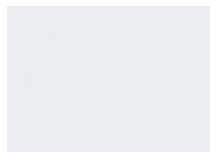
MASÁŽNÍ ČERPADLA	
Vodní Čerpadlo	1.800 W / 2,5 HP
Vzduchové Čerpadlo	400 W

FILTRACE A OHŘEV	
Cirkulační Čerpadlo	250 W
Ohřev	3.000 W
Typ Filtru	Cartridge

ELEKTRICKÉ PŘIPOJENÍ	
Příkon Low Amp (W) / (A) To 230 V	3.400 W / 14,8 A
Napájení	230 V / 400 V III

### Provedení Skořepiny

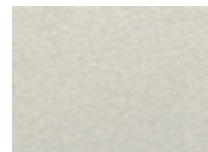
### Barva Akrylu



44 White



27 Winter Solstice



72 Pearl Cameo



59 Sterling



18 Sand

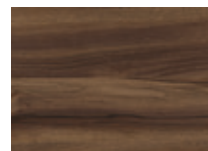
### Obložení



Graphite

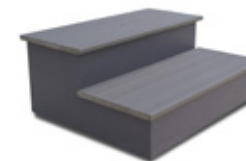


Thunder



Walnut

### Doplňky



*GRAPHITE Schody*



*Usnadní Zvedání A Manipulaci*



*Ideální sada pro údržbu vody ve vířivce*

Overeenkomstig ons beleid van voortdurende ontwikkeling behouden wij ons het recht voor om de specificaties geheel of gedeeltelijk te wijzigen zonder voorafgaande kennisgeving.