

EASY ACCESS



The Easy Access Model is a versatile and elegant model, which main feature is its accessibility.

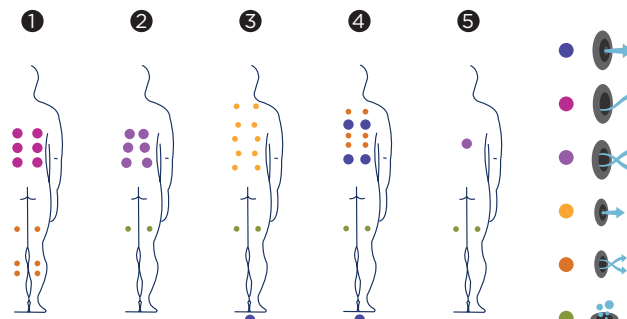
Provided with two build-in steps inside the Spa, a stylish outside stair case with two steps made out of "Solid Surface" material along with its stainless steel hand rail makes it effortless to get in and out of the Spa.

Positions: 5 (4 / 1)

Measures: 216 x 198 x 90



Optional:





ref: 52565

Technical specifications

Measures (±2cm)	216 x 198 x 90
Positions (seats/loungers)	5 (4 / 1)
Water capacity (l)	980
Weight (empty / full) (kg)	330 / 1.310

Cabinet coating	Graphite / Thunder / Walnut
Without cabinet	Optional
Acrylic colours	44 / 27 / 72 / 59 / 18 / 64

FEATURES	
Total massage points	48
High pressure micro-massage	10
Circular anti-stress massage	7
Circular drainage massage	6
Reflex foot massage	1
Neck massage	2
Intensive treatment lounger jets	12
Relax Impact System nozzles	8
Waterfall	-
Water fountains	2
Headrests	3
Digital Control Panel	•
Ultraviolet Treatment	•
Galvanised metal structure	•
ABS base	•
Energy Saving Cover	•
EcoSpa	Optional
Nordic Insulation System	Optional

FINISHES	
Colour Sense	5 LED + illuminated accessories
Pure Line Lighting	Optional
Bluetooth surround sound	Optional
Stainless steel nozzles	•
Woodermax Cabinet	•
Design Line	Optional
Stainless steel handrail	•
Aromatherapy	•
Easy Access Steps	Optional
Programmable WiFi Touch Panel	Optional
Flexible Massage	-

MESSAGE PUMPS	
Water massage	2 x 1.800 W / 2,5 HP
Relax Impact Pump	1.150 W

FILTRATION AND HEATING	
Recirculation pump	250 W
Water heater	3.000 W
Type of filter	Cartridge
High Performance Water Care	•

POWER SUPPLY	
Power requirement LOW AMP (W) / (A) to 230 V	5.200 W / 22,4 A
Voltage	230 V / 400 V III

Shell finishes

Acrylic colors



44 White

27 Winter Solstice

72 Pearl Cameo



59 Sterling

18 Sand

64 Pearl Shadow

Furniture finishes



Graphite

Thunder

Walnut



Accessories



Filter cleaner



Water care

According to our policy of constant evolution, we reserve the right to modify the specifications in part or in whole without forewarning.

EASY ACCESS



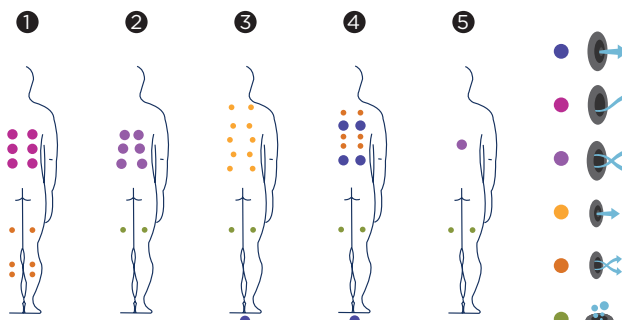
Le modèle Easy Access est un produit très versatile et élégant dont la caractéristique principale réside dans son immense facilité d'accès. Le spa dispose de deux marches moulées dans la coque auquel vient se rajouter un escalier en solid surface avec une rampe de sortie en inox solidement fixé. Ce spa bénéficie ainsi d'une facilité d'accès pour tous.

Positions: 5 (4 / 1)

Dimensions: 216 x 198 x 90



Optional:





ref: 52565

Caractéristiques techniques

Dimensions (±2cm)	216 x 198 x 90
Positions (assises / allongées)	5 (4 / 1)
Volume Eau (l)	980
Poids (vide / plein) (kg)	330 / 1.310

Type Revêtement Meuble Extérieur	Graphite / Chêne blanchi / Noyer
Sans habillage	Option
Couleurs Acrylique	44 / 27 / 72 / 59 / 18 / 64

PRESTATIONS	
Total Points de Massage	48
Micro Massage Localisé Pression	10
Massage Rotatif Anti-tension	7
Massage Rotatif Drainage	6
Massage Pieds Reflexo	1
Massage Cervical	2
Jets Chaise-Longue Intensive Treatment	12
Buses Relax Impact System	8
Cascades Eau	-
Sources Eau	2
Appuie-tête	3
Panneau de Commande Numérique	•
Ultraviolet Treatment UV	•
Structure Métal Galvanisé	•
Base ABS	•
Energy Saving Cover	•
EcoSpa	Option
Nordic Insulation System	Option

FINITIONS	
Colour Sense	5 LED + Accessoires éclairés
Pure Line Lighting	Option
Surround Bluetooth Audio	Option
Buses Inoxydable	•
Meuble Woodermax	•
Design Line	Option
Barre Inoxydable	•
Aromatherapy	•
Escalier Accès Easy Access	Option
Touch Panel Programmable Wifi	Option
Flexible Massage	-

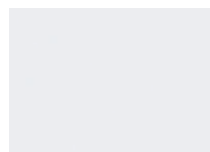
POMPES DE MASSAGE	
Massage d'eau	2 x 1.800 W / 2,5 CV
Relax Impact Pump	1.150 W

FILTRATION ET CHAUFFAGE	
Pompe de recirculation	250 W
Chauffage d'eau	3.000 W
Type de filtre	Cartouche
High Performance Water Care	

COURANT ÉLECTRIQUE	
Puissance maximale LOW AMP (W) / (A) 230 V	5.200 W / 22,4 A
Tension	230 V / 400 V III

Matériel des Spas

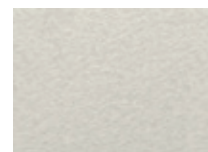
Couleurs Acrylique



44 Blanc



27 Winter Solstice



72 Pearl Cameo



59 Sterling



18 Sand



64 Pearl Shadow

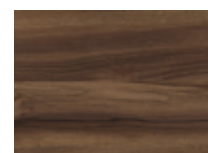
Bois des Spas



Graphite



Chêne blanchi



Noyer

AQUAVIA
S P A

Accessories



*Ustensiles de nettoyage
des filtres Cartouche*



Kit de désinfection

Dans le cadre de notre politique d'améliorations constantes, nous nous réservons le droit de modifier/d'amender nos spécifications n'importe quand et sans aucun préavis.

EASY ACCESS



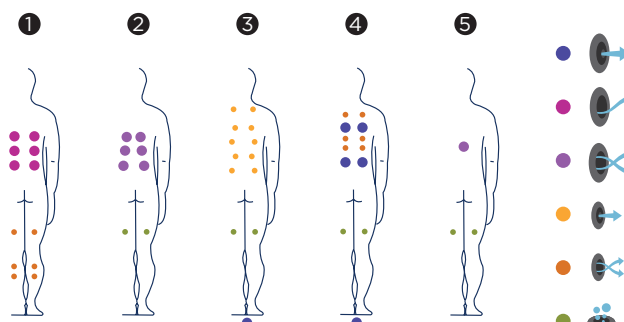
Das Modell Easy Access ist ein sehr vielseitiges und elegantes Produkt, dessen wichtigstes Merkmal der besonders einfache Zugang ist. Ergänzt wird der Spa mit einer stabilen Leiter aus Solid Surface (Mineralguss) für maximale Haltbarkeit und Stabilität, die vom Boden bis zum Spa mit einer Stange aus Edelstahl gesichert ist. Im Inneren ist eine weitere Leiter in das Design integriert, die den Zutritt oder das Aussteigen aus dem Spa noch mehr erleichtert.

Positionen: 5 (4 / 1

Dimensionen: 216 x 198 x 90



Optional:





ref: 52565

Ausstattung

Dimensionen (±2cm)	216 x 198 x 90
Positionen (Sitze/Liege)	5 (4 / 1)
Wasservolumen (l)	980
Gewicht (leer/befüllt) (kg)	330 / 1.310

Verkleidungstyp Außenrahmen	Graphit / Thunder / Nussbaum
Metallrahmen	Option
Acrylfarben	44 / 27 / 72 / 59 / 18 / 64

LEISTUNGEN	
Massagepunkte gesamt	48
Örtliche Druck-Mikromassage	10
Kreisende spannungslösende Massage	7
Kreisende Drainage-Massage	6
Fußreflexmassage	1
Halswirbelmassage	2
Jets Liege intensive Behandlung	12
Düsen Relax Impact System	8
Wasserfälle	-
Wasserquellen	2
Kopfstützen	3
Digitales Bedienfeld	•
Ultraviolet Treatment UV	•
Verzinkter Metallrahmen	•
ABS-Platte	•
Thermoabdeckung	•
EcoSpa	Option
Nordic Insulation System	Option

AUSFÜHRUNGEN	
Colour Sense	5 LED + Beleuchtungszubehör
Pure Line Lighting	Option
Surround Bluetooth Audio	Option
Düsen Edelstahl	•
Rahmen Woodermax	•
Design Line	Option
Edelstahlstange	•
Aromatherapie	•
Zutrittsleiter Easy Access	Option
Programmierbares Touch Panel Wifi	Option
Flexible Massage	-

MESSAGEPUMPEN	
Wassermassage / Jetpumpe	2 x 1.800 W / 2,5 HP
Relax Impact Pump / Gebläse	1.150 W

FILTER UND HEIZUNG	
Silent Pump / Umwälzpumpe	250 W
Wassrerhitzer	3.000 W
Filterung	Kartuschenfilter
Filtertyp	

ELEKTRISCHE SPANNUNG	
Leistung Option niedrige Stromstärke (W) / (A) 230 V	5.200 W / 22,4 A
Stromspannung	230 V / 400 V III

72 Pearl Cameo

Acrylfarben



44 Weiß

27 Winter Solstice

72 Pearl Cameo



59 Sterling

18 Sand

64 Pearl Shadow

Verkleidungstyp Außenrahmen



Graphit

Thunder

Nussbaum

Zubehör



Filterreiniger Kartusche



Wasserpflege-Kit

Im Rahmen unserer Bemühungen um ständige Verbesserungen behalten wir uns das Recht vor, ohne weitere Bekanntmachungen Änderungen an der Konstruktion und den technischen Daten vorzunehmen.

EASY ACCESS



El modelo Easy Access, es un producto muy versátil y elegante, cuya principal característica es su facilidad de acceso.

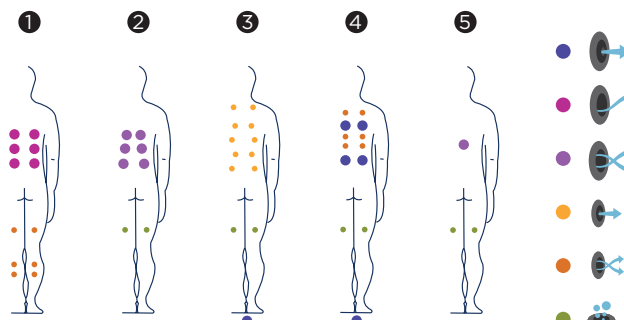
El Spa dispone de una escalera en su interior, compuesta de dos peldaños, integrada totalmente en el diseño del producto. Se complementa con una elegante escalera exterior con barandilla, fabricada en acero inoxidable y dos peldaños acabados en Solid Surface. La barandilla en acero inoxidable facilita el acceso y salida del interior del Spa.

Posiciones: 5 (4 / 1)

Medidas: 216 x 198 x 90



Opcional:





ref: 52565

Características técnicas

Medidas (±2cm)	216 x 198 x 90
Posiciones (sentado / tumbado)	5 (4 / 1)
Volumen Agua (l)	980
Peso (vacío / lleno) (kg)	330 / 1.310

Tipo Revestimiento Mueble Exterior	Grafito / Thunder / Nogal
Sin revestimiento	Opcional
Colores Acrílico	44 / 27 / 72 / 59 / 18 / 64

PRESTACIONES	
Total Puntos de Masaje	48
Micro Masaje Localizado Presión	10
Masaje Rotativo Antitensión	7
Masaje Rotativo Drenaje	6
Masaje Pies Reflexo	1
Masaje Cervical	2
Jets Tumbona Intensive Treatment	12
Boquillas Relax Impact System	8
Cascadas Agua	-
Fuentes Agua	2
Reposacabezas	3
Panel de Control Digital	•
Ultraviolet Treatment UV	•
Estructura Metálica Galvanizada	•
Base ABS	•
Energy Saving Cover	•
EcoSpa	Opcional
Nordic Insulation System	Opcional

ACABADOS	
Colour Sense	5 LED + accesorios iluminados
Pure Line Lighting	Opcional
Surround Bluetooth Audio	Opcional
Jets/Boquillas Inoxidable	•
Mueble Woodermax	•
Design Line	Opcional
Barra Inoxidable	•
Aromatherapy	•
Escalera Acceso Easy Access	Opcional
Touch Panel Programable Wifi	Opcional
Flexible Massage	-

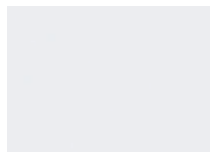
BOMBAS DE MASAJE	
Masaje de agua	2 x 1.800 W / 2,5 CV
Relax Impact Pump	1.150 W

FILTRACIÓN Y CALEFACCIÓN	
Bomba de recirculación	250 W
Calentador de agua	3.000 W
Tipo de filtro	Cartucho
High Performance Water Care	

CORRIENTE ELÉCTRICA	
Potencia requerida LOW AMP (W) / (A) a 230 V	5.200 W / 22,4 A
Voltaje	230 V / 400 V III

Acabados Casco

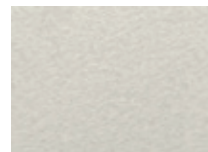
Colores Acrílico



44 Blanco



27 Winter Solstice



72 Perla Cameo



59 Sterling



18 Sand



64 Pearl Shadow

Acabados Mueble



Grafito



Thunder



Nogal

Accesorios

AQUAVIA
S P A



Limpia filtros



Kit de desinfección

Como parte de nuestra política de mejoramiento continuo, nos reservamos el derecho de modificar el diseño y/o especificaciones sin previo aviso.

EASY ACCESS



Il modello Easy Access, è un prodotto molto versatile ed elegante, la cui principale caratteristica è la facilità di accesso.

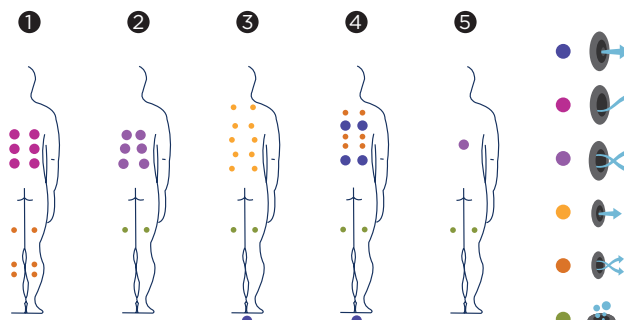
La spa dispone di una scala all'interno, composta da due scalini, totalmente integrata nel design del prodotto. È completata da un'elegante scala esterna con passamano, fabbricata in acciaio inossidabile e due scalini rifiniti in Solid Surface. Il passamano in acciaio inossidabile facilita l'accesso e l'uscita dall'interno della spa.

Posizioni: 5 (4 / 1)

Misure: 216 x 198 x 90



Optional:





ref: 52565

Caratteristiche

Misure (±2 cm)	216 x 198 x 90
Posizioni (seduto / sdraiato)	5 (4 / 1)
Volume acqua (l)	980
Peso (vuota/piena) (kg)	330 / 1.310

Tipo di rivestimento del mobile esterno	Grafite / Thunder / Noce
Senza rivestimento	Opzionale
Colori Acrilico*	44 / 27 / 72 / 59 / 18 / 64

PRESTAZIONI	
Totale punti di massaggio	48
Micro massaggio localizzato a pressione	10
Massaggio rotativo antitensione	7
Massaggio rotativo drenante	6
Massaggio ai piedi Reflexo	1
Massaggio cervicale	2
Jet lettino Intensive Treatment	12
Bocchette Relax Impact System	8
Cascate d'acqua	-
Fontane d'acqua	2
Poggiatesta	3
Pannello di controllo digitale	•
Ultraviolet Treatment UV	•
Struttura metallica galvanizzata	•
Base ABS	•
Energy Saving Cover	•
EcoSpa	Opzionale
Nordic Insulation System	Opzionale

FINITURE	
Colour Sense	5 LED + Accessori illuminati
Pure Line Lighting	Opzionale
Surround Bluetooth Audio	Opzionale
Jet/Bocchette Inossidabile	•
Mobile Woodermax	•
Design Line	Opzionale
Barra inossidabile	•
Aromatherapy	•
Scala di accesso Easy Access	Opzionale
Touch Panel Programmabile Wi-Fi	Opzionale
Flexible Massage	-

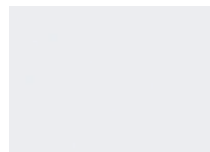
POMPE DI MASSAGGIO	
Massaggio ad acqua	2 x 1.800 W / 2,5 CV
Relax Impact Pump	1.150 W

FILTRAGGIO E RISCALDAMENTO	
Pompa di ricircolo	250 W
Scaldaacqua	3.000 W
Tipo di filtro	Cartuccia
High Performance Water Care	

CORRENTE ELETTRICA	
Potenza necessaria LOW AMP (W) / (A) a 230 V	5.200 W / 22,4 A
Tensione	230 V / 400 V III

Materiale Vasca

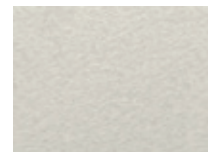
Colori superficie acrilica



44 Bianco



27 Winter Solstice



72 Perla Cameo



59 Sterling



18 Sand



64 Pearl Shadow

Mobile in sintetico



Grafite



Thunder

Accessori

AQUAVIA
S P A



Pulizia dei filtri



Kit di disinfezione

Fedeli alla nostra politica di continuo miglioramento, ci riserviamo il diritto di modificare il design e/o le specifiche senza preavviso.

EASY ACCESS



Het Easy Access-model is een veelzijdig en elegant model dat vooral gemakkelijk toegankelijk is.

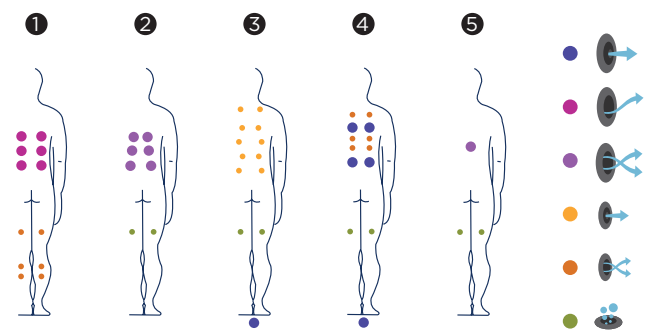
Deze spa heeft twee ingebouwde treden binnenin en een stijlvol trapje met twee treden uit Solid Surface-materiaal en een roestvrijstalen leuning aan de buitenkant zodat iedereen moeiteloos in en uit de spa kan.

Posities: 5 (4 / 1)

Afmetingen: 216 x 198 x 90



Optional:



Technische eigenschappen



ref: 52565

Afmetingen (± 2 cm)	216 x 198 x 90
Posities (zit-/ligplaatsen)	5 (4 / 1)
Watervolume (L)	980
Gewicht (leeg/vol) (kg)	330 / 1.310

Coating raamwerk	Grafiet / Thunder / Walnoot
Zonder raamwerk	Optioneel
Acrylkleuren	44 / 27 / 72 / 59 / 18 / 64

KENMERKEN	
Aantal massagepunten	48
Micromassage met hoge druk	10
Cirkelvormige anti-stressmassage	7
Cirkelvormige drainagemassage	6
Voetreflexmassage	1
Nekmassage	2
Ligplaatsjets voor intensieve behandeling	12
Relax Impact System-injectoren	8
Waterval	-
Waterfonteinen	2
Hoofsteunen	3
Digitaal bedieningspaneel	•
Ultraviolet behandeling	•
Structuur in gegalvaniseerd metaal	•
Basis in ABS	•
Energy Saving Cover	•
EcoSpa	Optioneel
Nordic Insulation System	Optioneel

AFWERKINGEN	
Colour Sense	5 LED + Verlichte accessoires
Pure Line Lighting	Optioneel
Surround Bluetooth Audio	Optioneel
Roestvrijstalen injectoren	•
Woodermax-raamwerk	•
Design Line	Optioneel
Roestvrijstalen stang	•
Aromatherapy	•
Easy Access-trapje	Optioneel
Programmeerbaar wifi-aanraakscherm	Optioneel
Flexible Massage	-

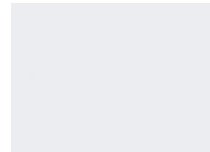
MASSAGEPOMPEN	
Watermassage	2 x 1.800 W / 2,5 PK
Relax Impact-pomp	1.150 W

FILTRATIE EN VERWARMING	
Recirculatiepomp	250 W
Waterboiler	3.000 W
Filtertype	Patroon
High Performance Water Care	

STROOMTOEVOER	
Vereist vermogen LOW AMP (W) / (A) aan 230 V	5.200 W / 22,4 A
Spanning	230 V / 400 V III

Afwerking

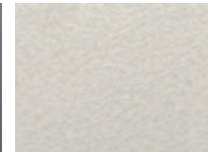
Acrylkleuren



44 White



27 Winter Solstice



72 Pearl Cameo



59 Sterling



18 Sand



64 Pearl Shadow

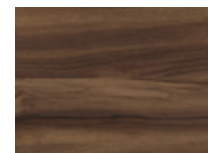
Coating raamwerk



Grafiet



Thunder



Walnoot

AQUA VIA
S P A

Accessoires



Filterreiniger



Ideale kit voor het reinigen van uw spawater

Overeenkomstig ons beleid van voortdurende ontwikkeling behouden wij ons het recht voor om de specificaties geheel of gedeeltelijk te wijzigen zonder voorafgaande kennisgeving.

EASY ACCESS



Model Easy Access je mimořádně všestranný a elegantní model, jehož hlavním rysem je velmi snadný vstup. K vaně je dodáván s robustními schody z pevného materiálu pro maximální trvanlivost a odolnost.

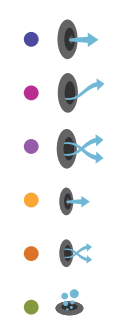
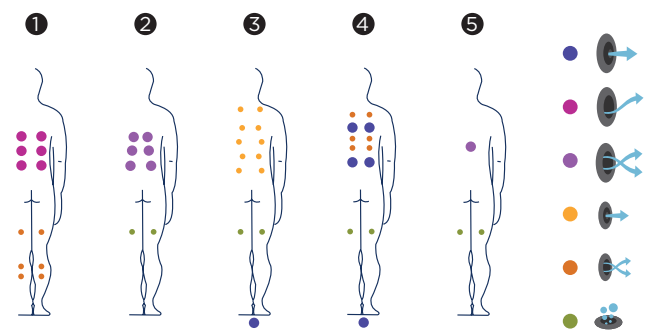
Madlo z nerezové oceli poskytuje skvělou oporu a vede vaše kroky. Uvnitř vany jsou vestavěné schody, které usnadní snadné nastupování a vystupování z vířivky.

Pozice: 5 (4 / 1)

Rozměry: 216 x 198 x 90



Optional:





ref: 52565

Technická Specifikace

Rozměry (±2cm)	216 x 198 x 90
Pozice (sedačky/lehátka)	5 (4 / 1)
Vodní Kapacita (l)	980
Váha (prázdná/plná) (kg)	330 / 1.310

Obložení	Graphite / Thunder / Walnut
Bez obložení	Volitelné
Barva Akrylu	44 / 27 / 72 / 59 / 18 / 64

VÝBAVA	
Celkový Počet Trysek	48
Přímé trysky	10
Antistresové rotační	7
Rotační trysky	6
Trysky pro masáž nohou	1
Křční trysky	2
Trysky v lehátku	12
Vzduchové trysky	8
Vodopád	-
Vodní fontánka	2
Opěrky	3
Digitální Ovládací Panel	•
Uv Lampa	•
Pozinkovaná Konstrukce	•
Abs Zpodní Plát	•
Termokkryt	•
Ecospa	Volitelné
Nordic Insulation System	Volitelné

DOPLNKOVÁ VÝBAVA	
Colour Sense	5 LED + Illuminated accessories
Podsvícení Obložení	Volitelné
Bluetooth Surround Systém	Volitelné
Nerezové Provedení	•
Woodermax Obložení	•
Design Line	Volitelné
Nerezové zábradlí	•
Aromatherapy	•
Přídavné Schůdky	Volitelné
Wi-Fi Dotykový Panel	Volitelné
Flexible Massage	-

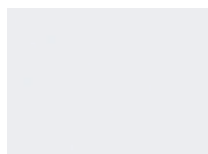
MASÁŽNÍ ČERPADLA	
Vodní Čerpadlo	2 x 1.800 W / 2,5 HP
Vzduchové Čerpadlo	1.150 W

FILTRACE A OHŘEV	
Cirkulační Čerpadlo	250 W
Ohřev	3.000 W
Typ Filtru	Cartridge
High Performance Water Care	

ELEKTRICKÉ PŘIPOJENÍ	
Příkon Low Amp (W) / (A) To 230 V	5.200 W / 22,4 A
Napájení	230 V / 400 V III

Provedení Skořepiny

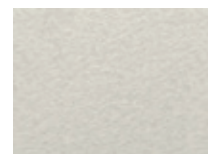
Barva Akrylu



44 White



27 Winter Solstice



72 Pearl Cameo



59 Sterling



18 Sand



64 Pearl Shadow

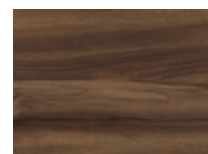
Obložení



Graphite



Thunder



Walnut

Doplňky

AQUAVIA
S P A



Filterreiniger



Ideální sada pro údržbu vody ve vířivce

V souladu s naší politikou neustálého vývoje si vyhrazujeme právo změnit specifikace bez předchozího upozornění.