

# AQUALIFE 6



This six-seater spa combines five seats equipped with different types of massage with a fully equipped lounger.

The 21 hydromassage jets are given an extra boost by the 16 air nozzles.

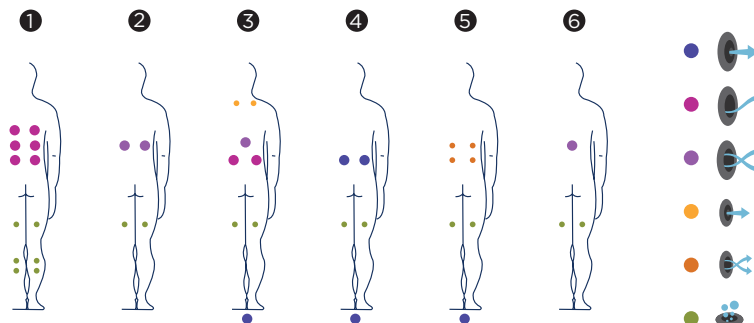
**Positions:** 6 (5 /1 )

**Measures:** 216 x 198 x 90



Optional:

- SILENT PUMP
- ENERGY SAVING COVER
- re|o|x IMPACT SYSTEM
- clean water
- BCN DESIGN
- METALLIC structure
- NORDIC INSULATION SYSTEM
- Ecospa
- WIFI Touch Panel
- Surround Bluetooth AUDIO





ref. 58903

## Technical specifications

Measures ( ±2cm)	216 x 198 x 90
Positions (seats/loungers)	6 (5 / 1)
Water capacity (l)	980
Weight (empty / full) (kg)	330 / 1.310

Cabinet coating	Graphite / Thunder Woodermax / Walnut Woodermax
Without cabinet	Optional
Acrylic colours	44 / 27 / 72 / 59 / 18

FEATURES	
Total massage points	<b>37</b>
High pressure micro-massage	2
Circular anti-stress massage	8
Circular drainage massage	8
Reflex foot massage	1
Neck massage	2
Intensive treatment lounger jets	-
Relax Impact System nozzles	16
Waterfall	-
Headrests	3
Digital Control Panel	•
Clean Water System	•
Galvanised metal structure	•
ABS base	•
Energy Saving Cover	•
EcoSpa	Optional
Nordic Insulation System	Optional

FINISHES	
3 LED spotlights	Optional
Bluetooth Sound	Optional
Stainless steel nozzles	•
Programmable WiFi Touch Panel	Optional

MESSAGE PUMPS	
Water massage	1.800 W / 2,5 HP
Relax Impact Pump	400 W

FILTRATION AND HEATING	
Recirculation pump	250 W
Water heater	3.000 W
Type of filter	Cartridge

POWER SUPPLY	
Power requirement LOW AMP (W) / (A) to 230 V	3.400 W / 14,8 A
Voltage	230 V / 400 V III

### Shell finishes

#### Acrylic colors



44 White

27 Winter Solstice

72 Pearl Cameo



59 Sterling

18 Sand

### Furniture finishes

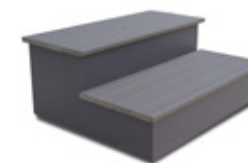


Graphite

Thunder

Walnut

### Accessories



Woodermax GRAPHITE step  
(or BASIC model)



*Ideal accessory for taking off the spa cover  
without any effort at all.*



Water care

According to our policy of constant evolution, we reserve the right to modify the specifications in part or in whole without forewarning.

# AQUALIFE 6



Ce Spa à 6 places combine cinq places assises offrant différents types de massage, avec une position allongée totalement équipée.

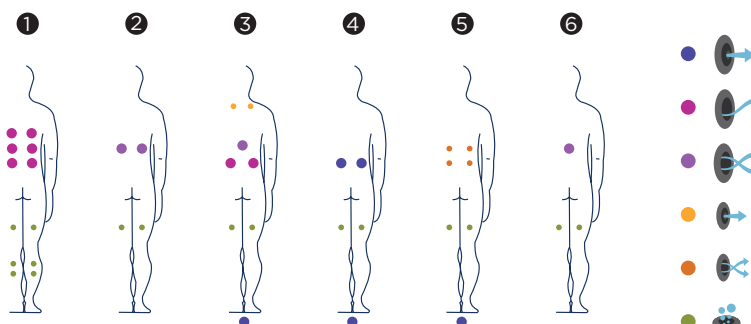
Les 21 jets d'hydromassage sont complétés par 16 buses soufflantes.

**Positions:** 6 (5 /1 )

**Dimensions:** 216 x 198 x 90



Option:



**Caractéristiques techniques**

ref. 58903

Dimensions ( ±2cm)	216 x 198 x 90
Positions (assises / allongées)	6 (5 / 1)
Volume Eau (l)	980
Poids (vide / plein) (kg)	330 / 1.310

Type de Revêtement Meuble Extérieur	Graphite / Chêne blanchi Woodermax / Noyer Woodermax
Sans habillage	Option
Couleurs Acrylique	44 / 27 / 72 / 59 / 18

PRESTATIONS	
Total Points de Massage	<b>37</b>
Micro Massage Localisé Pression	2
Massage Rotatif Anti-tension	8
Massage Rotatif Drainage	8
Massage Pieds Reflexo	1
Massage Cervical	2
Jets Chaise-Longue Intensive Treatment	-
Buses Relax Impact System	16
Cascades Eau	-
Appui-tête	3
Panneau de Commande Numérique	•
Clean Water System	•
Structure Métal Galvanisé	•
Base ABS	•
Energy Saving Cover	•
EcoSpa	Option
Nordic Insulation System	Option

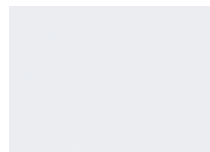
FINITIONS	
3 Ampoules LED	Option
Bluetooth Audio	Option
Buses Inoxydable	•
Touch Panel Programmable Wifi	Option

POMPES DE MASSAGE	
Massage d'Eau	1.800 W / 2,5 CV
Relax Impact Pump	400 W

FILTRATION ET CHAUFFAGE	
Pompe de recirculation	250 W
Chauffage d'eau	3.000 W
Type de filtre	Cartouche

COURANT ÉLECTRIQUE	
Puissance maximale LOW AMP (W) / (A) 230 V	3.400 W / 14,8 A
Tension	230 V / 400 V III

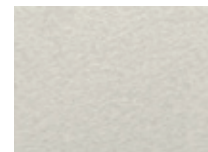
## Matériel des Spas

**Couleurs Acrylique**

44 Blanc



27 Winter Solstice



72 Pearl Cameo



59 Sterling



18 Sand

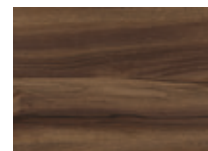
## Bois des Spas



Graphite

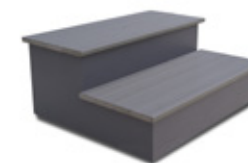


Chêne blanchi



Noyer

## Accessories

*Woodermax GRAPHITE escalier spa  
(ou BASIC modèle)**Accessoire idéal pour ramasser en toute  
commodité la couverture de votre Spa.**Kit de désinfection*

Dans le cadre de notre politique d'améliorations constantes, nous nous réservons le droit de modifier/d'amender nos spécifications n'importe quand et sans aucun préavis.

# AQUALIFE 6



Dieser Spa für insgesamt 6 Personen kombiniert 5 Sitze mit verschiedenen Massagetypen mit einer voll ausgestatteten Liege.

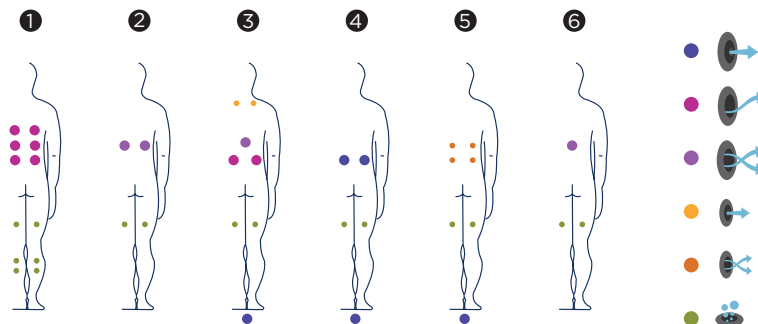
Die 21 Hydromassagejets werden durch die 16 Luftinjektoren ergänzt.

**Positionen:** 6 (5 / 1 )

**Dimensionen:** 216 x 198 x 90



Option:





ref. 58903

### Ausstattung

Dimensionen ( ±2cm)	216 x 198 x 90
Positionen (Sitze/Liege)	6 (5 / 1)
Wasservolumen (l)	980
Gewicht (leer/befüllt) (kg)	330 / 1.310

Verkleidungstyp Außenrahmen	Graphit / Thunder Woodermax / Nussbaum Woodermax
Metallrahmen	Option
Acrylfarben	44 / 27 / 72 / 59 / 18

LEISTUNGEN	
Massagepunkte gesamt	<b>37</b>
Örtliche Druck-Mikromassage	2
Kreisende spannungslösende Massage	8
Kreisende Drainage-Massage	8
Fußreflexmassage	1
Halswirbelmassage	2
Jets Liege intensive Behandlung	-
Düsen Relax Impact System	16
Wasserfälle	-
Kopfstützen	3
Digitales Bedienfeld	•
Clean Water System	•
Verzinkter Metallrahmen	•
ABS-Platte	•
Thermoabdeckung	•
EcoSpa	Option
Nordic Insulation System	Option

AUSFÜHRUNGEN	
3 LED-Strahler	Option
Bluetooth Audio	Option
Düsen Edelstahl	•
Programmierbares Touch Panel Wifi	Option

MESSAGEPUMPEN	
Wassermassage / Jetpumpe	1.800 W / 2,5 HP
Relax Impact Pump / Gebläse	400 W

FILTER UND HEIZUNG	
Silent Pump / Umwälzpumpe	250 W
Wassrerhitzer	3.000 W
Filtertyp	Kartuschenfilter

ELEKTRISCHE SPANNUNG	
Leistung Option niedrige Stromstärke (W) / (A) 230 V	3.400 W / 14,8 A
Stromspannung	230 V / 400 V III

### Ausführungstyp Becken

#### Acrylfarben



44 Weiß

27 Winter Solstice

72 Pearl Cameo



59 Sterling

18 Sand

### Verkleidungstyp Außenrahmen

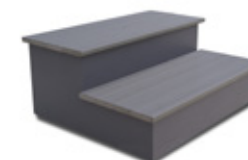


Graphit

Thunder

Nussbaum

### Zubehör



Woodermax GRAPHITE Spa-Leiter  
(oder BASIC modelle)



Ideales Zubehör zum bequemen Abnehmen  
der Spa-Abdeckung



Wasserpflege-Kit

Im Rahmen unserer Bemühungen um ständige Verbesserungen behalten wir uns das Recht vor, ohne weitere Bekanntmachungen Änderungen an der Konstruktion und den technischen Daten vorzunehmen.

# AQUALIFE 6



Este spa de 6 plazas, combina 5 asientos equipados con diferentes tipos de masaje, con una tumbona totalmente equipada.

Los 21 jets de hidromasaje, se complementan con los 16 inyectores de aire.

**Posiciones:** 6 (5 /1 )

**Medidas:** 216 x 198 x 90



SILENT PUMP

ENERGY SAVING COVER

reloax IMPACTSYSTEM

clean water

BCN DESIGN

METALLIC structure

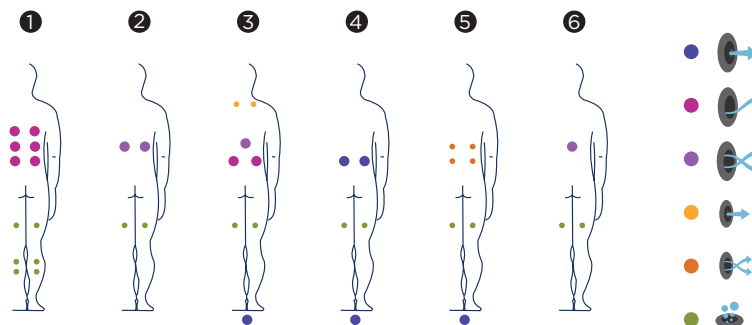
Optional:

NORDIC INSULATION SYSTEM

Ecospa

WIFI Touch Panel

Surround Bluetooth AUDIO



**Características técnicas**

ref. 58903

Medidas ( ±2cm)	216 x 198 x 90
Posiciones (sentado / tumbado)	6 (5 / 1)
Volumen Agua (l)	980
Peso (vacío / lleno) (kg)	330 / 1.310

Tipo Revestimiento Mueble Exterior	Grafito / Thunder Woodermax / Nogal Woodermax
Sin revestimiento	Opcional
Colores Acrílico	44 / 27 / 72 / 59 / 18

PRESTACIONES	
Total Puntos de Masaje	<b>37</b>
Micro Masaje Localizado Presión	2
Masaje Rotativo Antitensión	8
Masaje Rotativo Drenaje	8
Masaje Pies Reflexo	1
Masaje Cervical	2
Jets Tumbona Intensive Treatment	-
Boquillas Relax Impact System	16
Cascadas Agua	-
Reposacabezas	3
Panel de Control Digital	•
Clean Water System	•
Estructura Metálica Galvanizada	•
Base ABS	•
Energy Saving Cover	•
EcoSpa	Opcional
Nordic Insulation System	Opcional

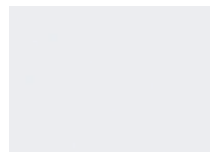
ACABADOS	
3 Focos LED	Opcional
Bluetooth Audio	Opcional
Boquillas Inoxidable	•
Touch Panel Programable Wifi	Opcional

BOMBAS DE MASAJE	
Masaje de agua	1.800 W / 2,5 CV
Relax Impact Pump	400 W

FILTRACIÓN Y CALEFACCIÓN	
Bomba de recirculación	250 W
Calentador de agua	3.000 W
Tipo de filtro	Cartucho

CORRIENTE ELÉCTRICA	
Potencia requerida LOW AMP (W) / (A) a 230 V	3.400 W / 14,8 A
Voltaje	230 V / 400 V III

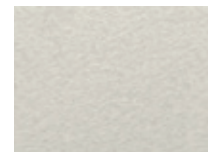
## Acabados Casco

**Colores Acrílico**

44 Blanco



27 Winter Solstice



72 Perla Cameo



59 Sterling



18 Sand

## Acabados Mueble



Grafito

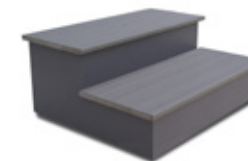


Thunder



Nogal

## Accesorios

*Escalera Woodermax GRAFITO  
(o modelo BASIC)**Accesorio ideal para recoger de  
forma cómoda la cubierta del spa**Kit de desinfección*

Como parte de nuestra política de mejoramiento continuo, nos reservamos el derecho de modificar el diseño y/o especificaciones sin previo aviso.



# AQUALIFE 6



Questa spa a 6 posti, combina 5 sedili equipaggiati con differenti tipi di massaggio, con un lettino totalmente equipaggiato.

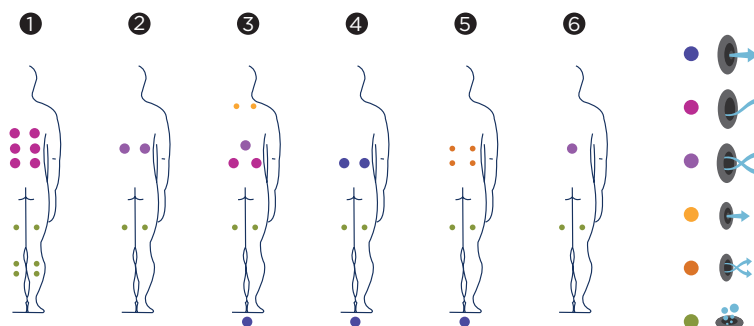
I 21 jet di idromassaggio sono completati da 16 iniettori d'aria.

**Posizioni:** 6 (5 /1 )

**Misure:** 216 x 198 x 90



Opzionale:





ref. 58903

## Caratteristiche

Misure ( ±2 cm)	216 x 198 x 90
Posizioni (seduto / sdraiato)	6 (5 / 1)
Volume acqua (l)	980
Peso (vuota/piena) (kg)	330 / 1.310

Tipo di rivestimento del mobile esterno	Grafite / Thunder Woodermax / Nogal Woodermax
Senza rivestimento	Opzionale
Colori Acrilico	44 / 27 / 72 / 59 / 18

PRESTAZIONI	
Totale punti di massaggio	<b>37</b>
Micro massaggio localizzato a pressione	2
Massaggio rotativo antitensione	8
Massaggio rotativo drenante	8
Massaggio ai piedi Reflexo	1
Massaggio cervicale	2
Jet lettino Intensive Treatment	-
Bocchette Relax Impact System	16
Cascate d'acqua	-
Poggiatesta	3
Pannello di controllo digitale	•
Clean Water System	•
Struttura metallica galvanizzata	•
Base ABS	•
Energy Saving Cover	•
EcoSpa	Opzionale
Nordic Insulation System	Opzionale

FINITURE	
3 luci LED	Opzionale
Bluetooth Audio	Opzionale
Bocchette Inossidabile	•
Touch Panel Programmabile Wi-Fi	Opzionale

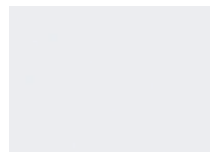
POMPE DI MASSAGGIO	
Massaggio ad acqua	1.800 W / 2,5 CV
Relax Impact Pump	400 W

FILTRAGGIO E RISCALDAMENTO	
Pompa di ricircolo	250 W
Scaldaacqua	3.000 W
Tipo di filtro	Cartuccia

CORRENTE ELETTRICA	
Potenza necessaria LOW AMP (W) / (A) a 230 V	3.400 W / 14,8 A
Tensione	230 V / 400 V III

### Materiale Vasca

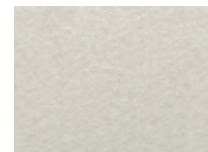
### Colori superficie acrilica



44 Bianco



27 Winter Solstice



72 Perla Cameo



59 Sterling



18 Sand

### Mobile in sintetico



Grafite

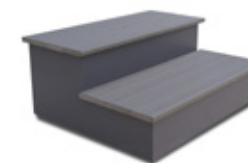


Thunder



Noce

### Accessori



*Escaletta Woodermax GRAFITE  
(o BASIC)*



*Copertura con supporto metalico*



*Kit di disinfezione*

Fedeli alla nostra politica di continuo miglioramento, ci riserviamo il diritto di modificare il design e/o le specifiche senza preavviso.

# AQUALIFE 6



Deze spa voor zes personen heeft vijf zitplaatsen met verschillende types massages en een volledig uitgeruste ligplaats.

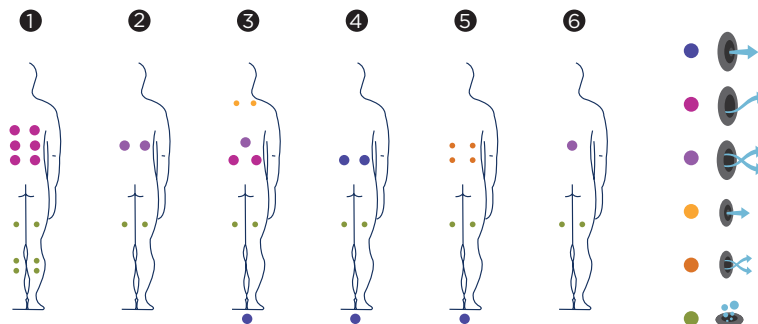
De 21 hydromassagejets krijgen een extra boost van de 16 luchtinjectoren.

**Posities:** 6 (5 /1 )

**Afmetingen:** 216 x 198 x 90



Optioneel:



**Technische eigenschappen**

ref. 58903

Afmetingen (± 2 cm)	216 x 198 x 90
Posities (zit-/ligplaatsen)	6 (5 / 1)
Watervolume (L)	980
Gewicht (leeg/vol) (kg)	330 / 1.310

Coating raamwerk	Grafiet / Thunder Woodermax / Walnoot Woodermax
Zonder raamwerk	Optioneel
Acrylkleuren	44 / 27 / 72 / 59 / 18

KENMERKEN	
Micromassage met hoge druk	<b>37</b>
Micromassage met hoge druk	2
Cirkelvormige anti-stressmassage	8
Cirkelvormige drainagemassage	8
Voetreflexmassage	1
Nekmassage	2
Ligplaatsjets voor intensieve behandeling	-
Relax Impact System-injectoren	16
Waterval	-
Hoofsteunen	3
Digitaal bedieningspaneel	•
Clean Water-systeem	•
Structuur in gegalvaniseerd metaal	•
Basis in ABS	•
Energy Saving Cover	•
EcoSpa	Optioneel
Nordic Insulation System	Optioneel

AFWERKINGEN	
3 LED-spotlights	Optioneel
Audio Bluetooth	Optioneel
Roestvrijstalen injectoren	•
Programmeerbaar wifi-aanraakscherm	Optioneel

MASSAGEPOMPEN	
Watermassage	1.800 W / 2,5 PK
Relax Impact-pomp	400 W

FILTRATIE EN VERWARMING	
Hercirculatiepomp	250 W
Waterboiler	3.000 W
Filtertype	Patroon

STROOMTOEVOER	
Vereist vermogen LOW AMP (W) / (A) aan 230 V	3.400 W / 14,8 A
Spanning	230 V / 400 V III

**Afwerking****Acrylkleuren**

44 White

27 Winter Solstice

72 Pearl Cameo



59 Sterling

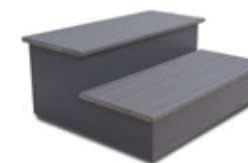
18 Sand

**Coating raamwerk**

Grafiet

Thunder

Walnoot

**Accessoires***GRAPHITE Spatrapje**Easy-off Spa Cover Lifter**Ideale kit voor het reinigen van uw spawater*

Overeenkomstig ons beleid van voortdurende ontwikkeling behouden wij ons het recht voor om de specificaties geheel of gedeeltelijk te wijzigen zonder voorafgaande kennisgeving.

# AQUALIFE 6



Deze spa voor zes personen heeft vijf zitplaatsen met verschillende types massages en een volledig uitgeruste ligplaats.

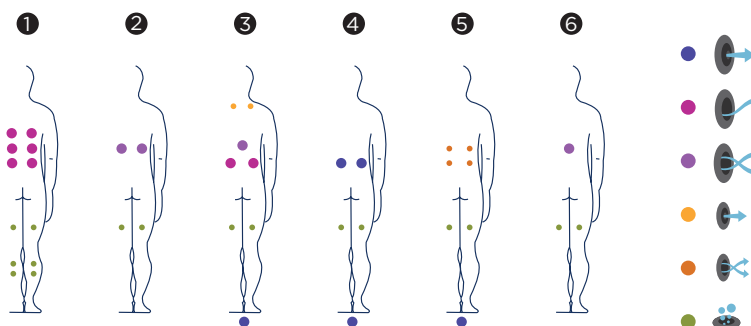
De 21 hydromassagejets krijgen een extra boost van de 16 luchtinjectoren.

**Posities:** 6 (5 / 1 )

**Afmetingen:** 216 x 198 x 90



Volitelné:





ref: 58903

## Technická Specifikace

Rozměry ( ±2cm)	216 x 198 x 90
Pozice (sedačky/lehátka)	6 (5 / 1)
Vodní Kapacita (l)	980
Váha (Prázdňá/Plná) (kg)	330 / 1.310

Obložení	Graphite / Thunder Woodermax / Walnut Woodermax
Bez obložení	Volitelné
Barva Akrylu	44 / 27 / 72 / 59 / 18

VÝBAVA	
Celkový Počet Trysek	<b>37</b>
Přímé Trysky	2
Antistresové Rotační	8
Rotační trysky	8
Trysky pro masáž nohou	1
Krční trysky	2
Lehátkové trysky	-
Vzduchové trysky	16
Vodopád	-
Opěrky	3
Digitální Ovládací Panel	•
Ozonátor	•
Pozinkovaná Konstrukce	•
Abs Zpodní Plát	•
Termokryt	•
EcoSpa	Volitelné
Nordic Insulation System	Volitelné

FINISHES	
3 Led Osvětlení	Volitelné
Bluetooth Audio	Volitelné
Nerezové Provedení	•
Wi-Fi Dotykový Panel	Volitelné

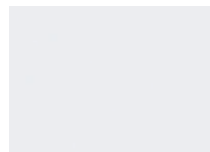
MASÁŽNÍ ČERPADLA	
Vodní Čerpadlo	1.800 W / 2,5 HP
Vzduchové Čerpadlo	400 W

FILTRACE A OHŘEV	
Cirkulační Čerpadlo	250 W
Ohřev	3.000 W
Typ Filtru	Cartridge

ELEKTRICKÉ PŘIPOJENÍ	
Příkon Low Amp (W) / (A) To 230 V	3.400 W / 14,8 A
Napájení	230 V / 400 V III

### Provedení Skořepiny

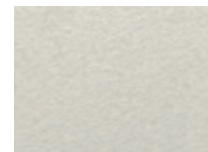
### Barva Akrylu



44 White



27 Winter Solstice



72 Pearl Cameo



59 Sterling



18 Sand

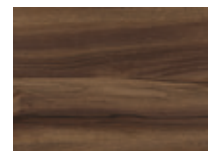
### Obložení



Graphite

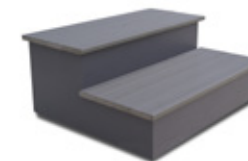


Thunder



Walnut

### Doplňky



*GRAPHITE Schody*



*Usnadní Zvedání A Manipulaci*



*Ideální sada pro údržbu vody ve vířivce*

Overeenkomstig ons beleid van voortdurende ontwikkeling behouden wij ons het recht voor om de specificaties geheel of gedeeltelijk te wijzigen zonder voorafgaande kennisgeving.